



Empire Suite

The stylish Empire Suites at the Holiday Inn London - Wembley have undergone a refresh, as part of a wider £12.5m refurbishment of the whole hotel. The Empire Suites are ideal for residential meetings, conferences and events. Features include natural daylight, newly upgraded AV facilities, air-conditioning, **free Wi-Fi** and an increased **capacity of up to 500 banqueting style**.

The Empire Suites at our hotel in Wembley have an impressive **780 square metres** of clear space. They are air-conditioned with plenty of **natural daylight** and totally flexible to adapt to any event. Sound proof partitions can divide the room into two for separate meeting, reception or exhibition spaces. They are supported by an adjoining cloakroom and private bar so that your function can be entirely self-contained.



Empire Suite 2

| | |
|----------------------|-----|
| Total m ² | 155 |
| Ceiling height (m) | 3.5 |



Capacity

| | |
|------------------------|-----|
| Theatre | 100 |
| Cabaret | 70 |
| Classroom | 50 |
| Boardroom | 30 |
| U-Shape | 30 |
| Banquet (tables of 10) | 80 |
| Reception | 100 |

| | |
|------------------|----------|
| Natural Daylight | No |
| Blackout Window | Yes |
| Air Conditioning | Yes |
| Onsite parking | 250 cars |



Nearby Stations

Wembley Stadium and Wembley Central



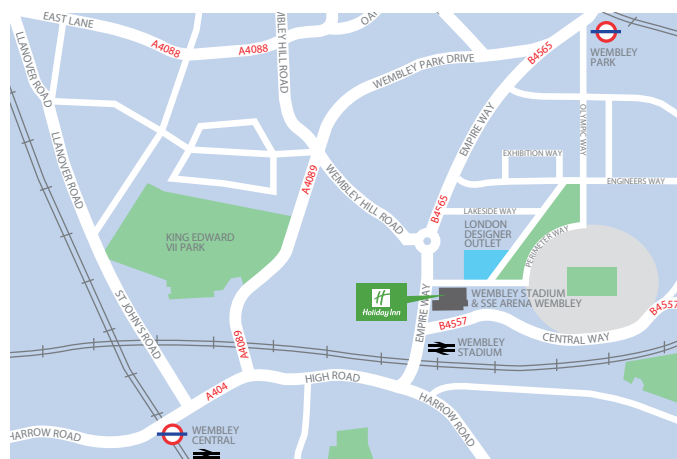
Nearby Underground Stations

Wembley Park and Wembley Central



Motorways

The Wembley arena hotel is also within easy reach of the North Circular, M1, M4, M40 and the M25.

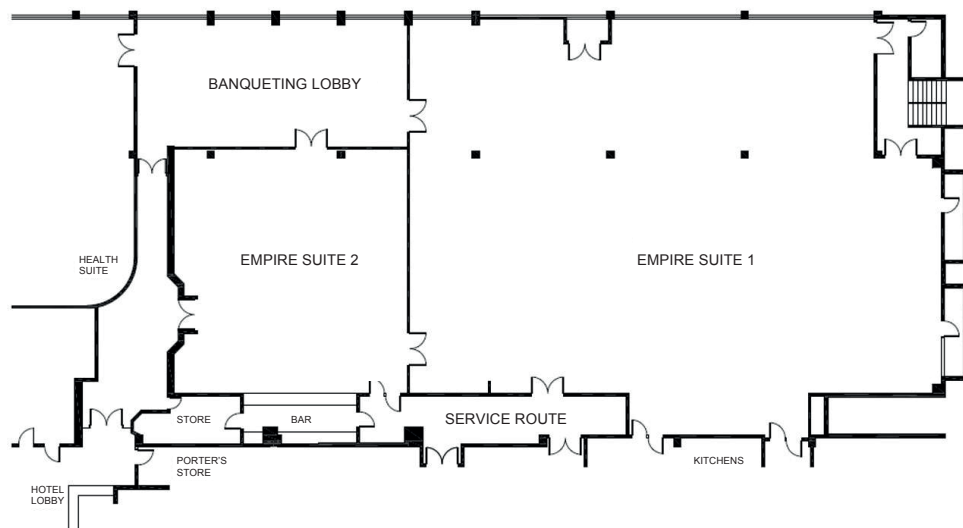


Call our Conference Team on
020 8902 8839

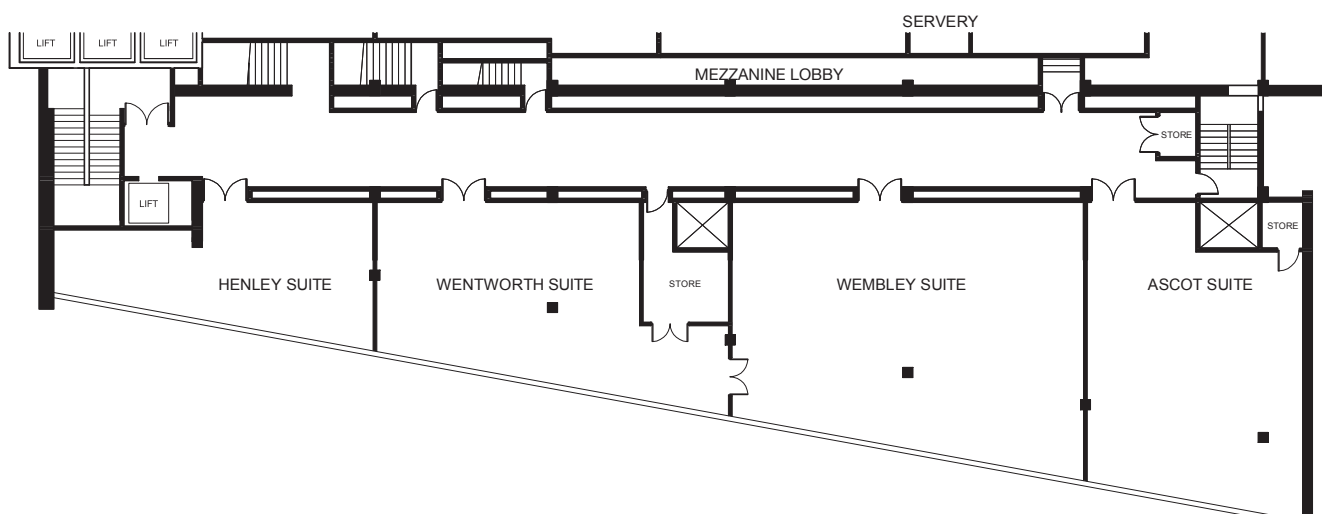
All our meeting rooms at a glance

| Meeting Room | Total m ² | Ceiling Height (m) | Theatre | Cabaret | Classroom | Boardroom | U-Shape | Banquet (tables of 10) | Reception | Natural Daylight | Blackout Window | Air Con | Floor |
|---------------------|----------------------|--------------------|---------|---------|-----------|-----------|---------|------------------------|-----------|------------------|-----------------|---------|--------|
| Empire Suite 1 | 544 | 3.5 | 500 | 240 | 240 | 100 | 90 | 350 | 450 | Y | Y | Y | Ground |
| Empire Suite 2 | 155 | 3.5 | 100 | 70 | 50 | 30 | 30 | 80 | 100 | N | Y | Y | Ground |
| Entire Empire Suite | 800 | 3.5 | 700 | 320 | 300 | 150 | 140 | 500 | 500 | Y | Y | Y | Ground |
| Wembley Suite | 162 | 2.4 | 120 | 80 | 48 | 30 | 40 | 100 | 140 | Y | Y | Y | Mezz |
| Ascot Suite | 97 | 2.4 | 80 | 40 | 32 | 24 | 24 | 70 | 100 | Y | Y | Y | Mezz |
| Wentworth Suite | 81 | 2.4 | 65 | 40 | 28 | 24 | 20 | 60 | 80 | Y | Y | Y | Mezz |
| Henley Suite | 38 | 2.4 | 30 | 15 | 16 | 12 | 14 | 30 | 30 | Y | Y | Y | Mezz |
| Boardroom | 30.1 | 2.5 | - | - | - | 14 | - | - | - | Y | Y | Y | 1st |
| Syndicate | 26.3 | 2.4 | - | - | - | 6 | - | - | - | Y | Y | Y | 1st |

Ground Floor



Mezzanine Floor



Call our Conference Team on
020 8902 8839